



Performance Qualification

• *Injector and Flow Precision*

• *Instruments and Fluidics*

<i>Instrument Name</i>	<i>Model</i>	<i>Supplier's Name</i>	<i>Serial Number</i>
Pump	ISO-3100SD	Thermo Scientific	8060011
Autosampler	WPS-3000TSL	Thermo Scientific	3600603
Column Oven	TCC-3000	Thermo Scientific	02240707
UV Detector	DAD-3000RS	Thermo Scientific	8043573
Chromeleon Datasystem	V. 6.80 SR16 Build 5387	Thermo Scientific	0

<i>Accessories</i>	<i>Description</i>
Back Pressure Device	Capillary (L:15 m; ID:0,18 mm)
Sample 4	Caffeine in Water 140 µg/ml
Solvent A	Water (HPLC-Grade)

• *Additional Information*

Customer: Customer's Name
 Operator: Operator's Name
 Operator's Jobtitle
 Execution Date: 2020-mars-27
 Next Qualification: 2020-sept

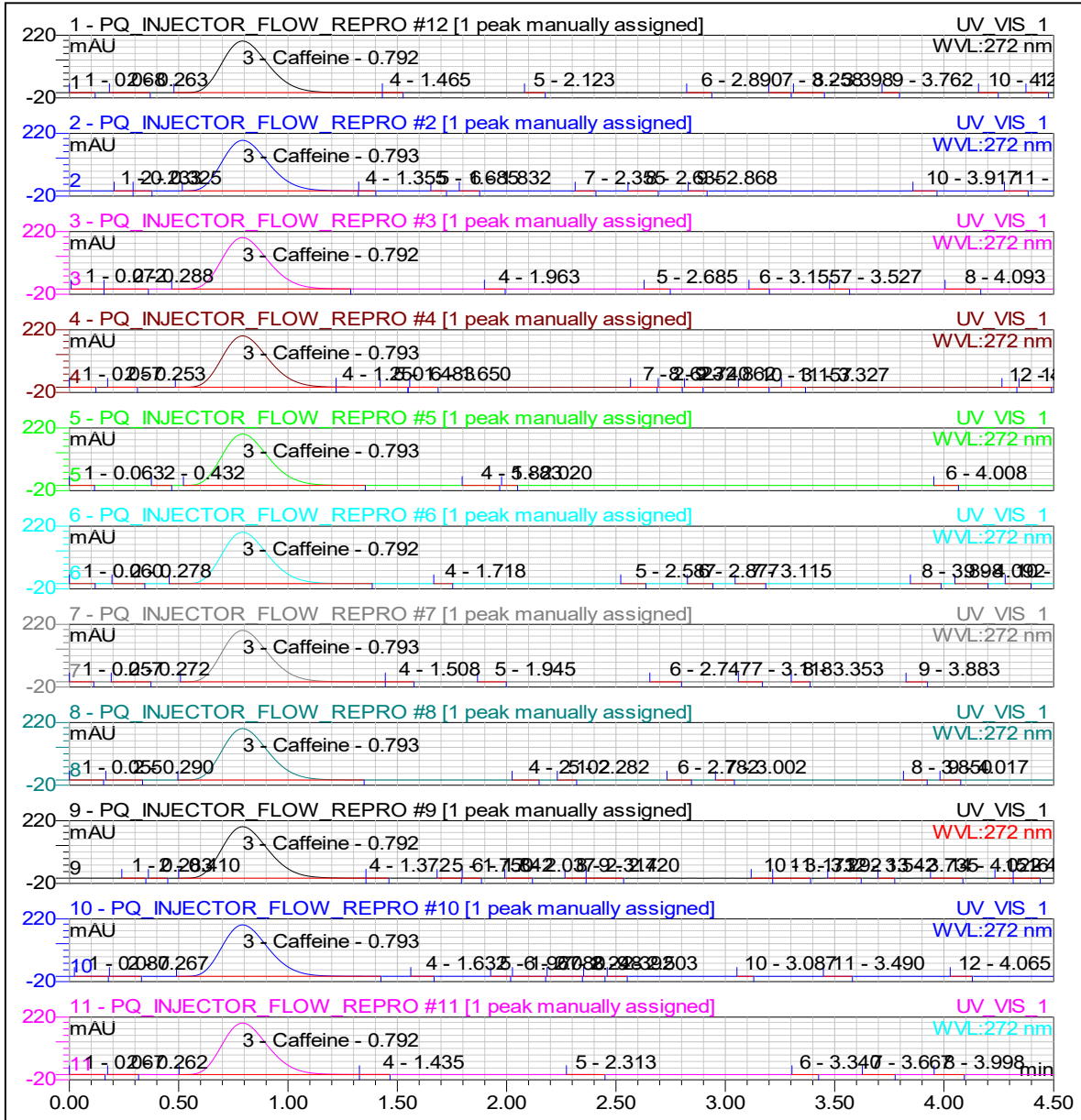
• *Limits, Values and Test Results*

	<i>Limit</i>	<i>Observed Value</i>	<i>Result</i>
Injector Precision - Area	<= 0,500 % RSD	0,140 % RSD	Test passed
Flow Precision - Ret. Time	<= 0,100 % RSD	0,111 % RSD	Test passed
	OR <= 0,0200 min SD	0,0009 min SD	

• *Signatures*

	<i>Signature</i>	<i>Date</i>
Submitter / Operator:	{seq.submitOperator.userName}	{seq.submitTime}
Reviewer:	{seq.reviewOperator.userName}	{seq.reviewTime}
Approver (e-sig. only):	{seq.approveOperator.userName}	{seq.approveTime}

• **Chromatogram Overlay**



Injection and Retention Time Precision

Name	Area	Ret.Time	Sample No.	Area
------	------	----------	------------	------

VR-A15-A	0
VF-A10-A	0

*) ModelNos without loop volume setting uses different evaluation formulas compared to ModelNos with loop volume setting.







No.	Ret. Time
------------	------------------

	<i>Deviation from the mean value [%]</i>
1	-0,105
2	0,105
3	0,105
4	-0,105
5	0,105
6	0,105
7	-0,105
8	0,105
9	-0,105
10	-0,105

Standard 4):